



--

--	--	--	--	--

--	--	--	--

0610/62

May/June 2017

1 hour

No Additional Materials are required.

READ THESE INSTRUCTIONS FIRST

DO **NOT** WRITE IN ANY BARCODES.

Answer **all** questions.

You may lose marks if you do not show your working or if you do not use appropriate units.

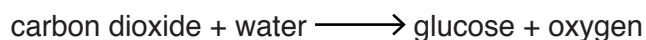
The number of marks is given in brackets [] at the end of each question or part question.

The syllabus is approved for use in England, Wales and Northern Ireland as a Cambridge International Level 1/Level 2 Certificate.

This document consists of **10** printed pages and **2** blank pages.

- 1 A student wanted to investigate the effect of different growing conditions on the rate of photosynthesis in plants.

When photosynthesis takes place in a leaf oxygen gas is produced and this is released into the air spaces in the leaf.



When small discs are cut from the leaf, the gases in the air spaces in the leaf discs can be removed. This allows the leaf discs to sink when they are placed in a liquid.

As photosynthesis takes place the leaf discs start to float. The time taken for the leaf discs to float indicates the rate of photosynthesis.

- Step 1 A student selected two plants, **X** and **Y**, which were of the same species but were growing in two different locations.
- Step 2 One leaf was removed from plant **X** and five small discs were cut from the leaf. Each leaf disc was 8 mm in diameter.
- Step 3 The student placed the five leaf discs from plant **X** into a syringe containing 5 cm³ of 2% sodium hydrogencarbonate solution.

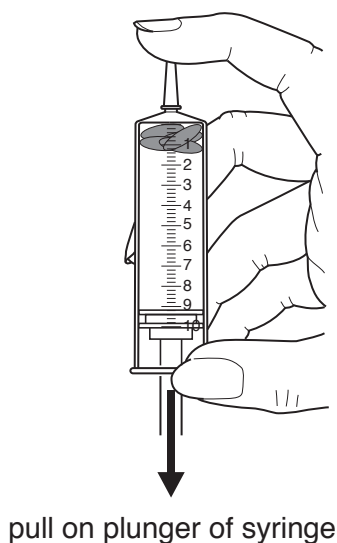


Fig. 1.1a

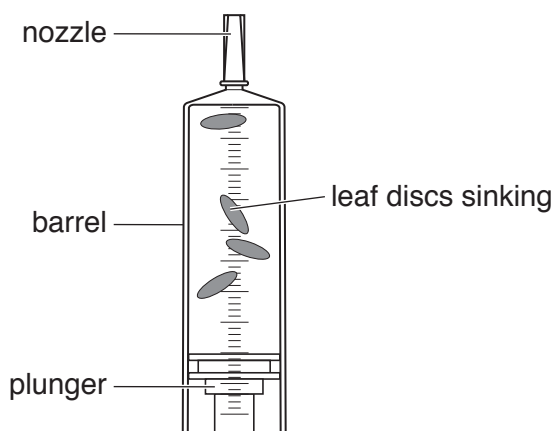


Fig. 1.1b

- Step 4 The student removed the air from the air spaces in the leaf discs from plant **X** by pulling and releasing the syringe plunger as shown in Fig. 1.1a. The leaf discs then sank to the bottom of the syringe as shown in Fig. 1.1b.

Step 5 The five leaf discs from plant **X** were removed from the syringe and each one was placed into a separate test-tube in a test-tube rack.

2% sodium hydrogencarbonate solution was poured into each test-tube to a height of approximately 5 cm from the bottom of the test-tube. This is shown in Fig. 1.2.

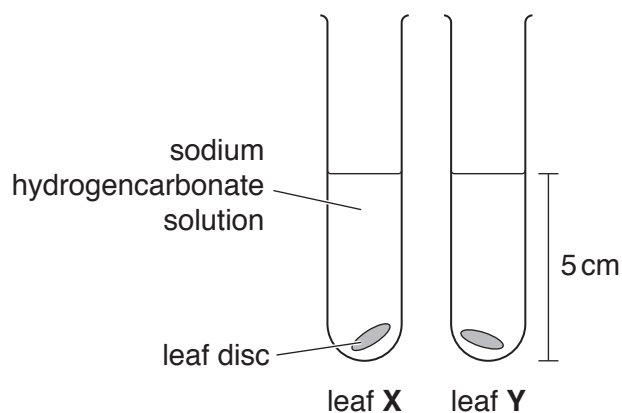


Fig. 1.2

Step 6 A lamp was placed at a distance of 10 cm from the edge of the test-tube rack. This is shown in Fig. 1.3.

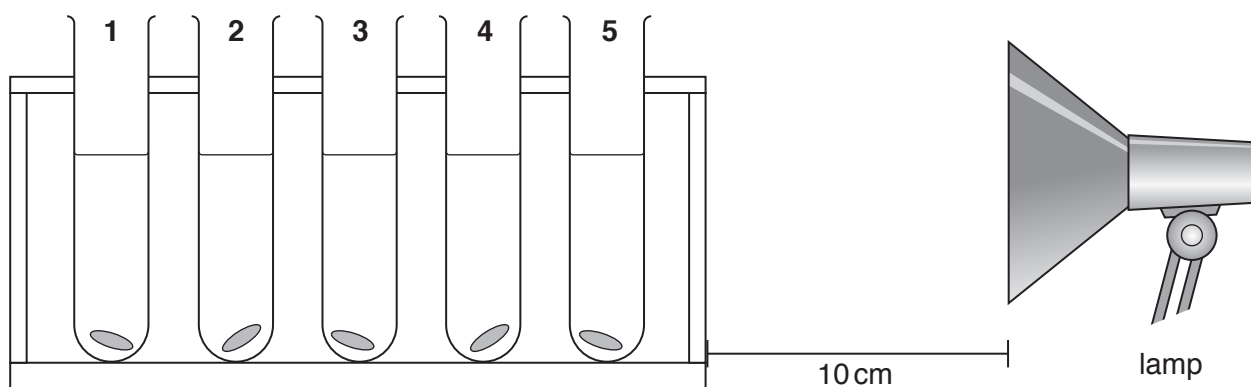


Fig. 1.3

Step 7 The lamp was switched on and a timer was started. The time taken for each of the five leaf discs to **start** to rise to the surface of the liquid in the test-tube was recorded.

Step 8 The student repeated steps 2 to 7 for the five leaf discs from plant **Y**.

The student's results are shown in Fig. 1.4.

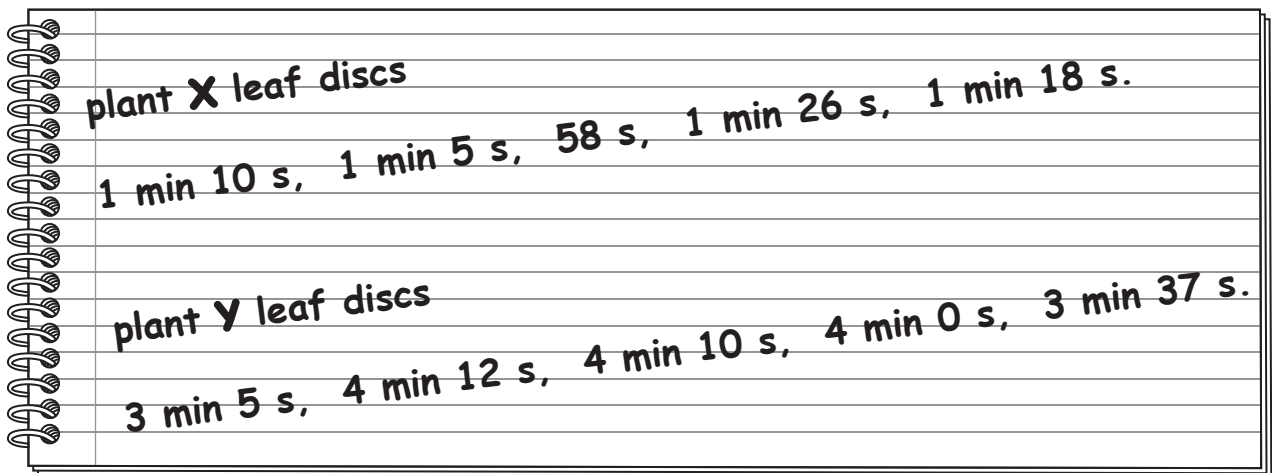


Fig. 1.4

- (a) (i) Prepare a table to record the results shown in Fig. 1.4.

Record the student's results in your table.

[4]

- (ii) Calculate the average time taken for the leaf discs from plant X and the leaf discs from plant Y to rise. Include the units and give your answer as a whole number.

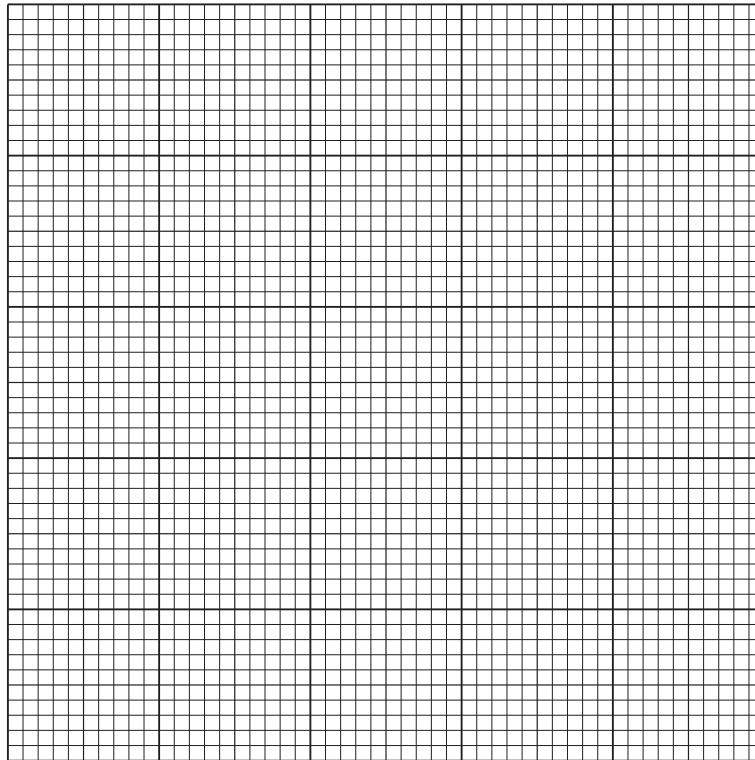
Space for working.

X

Y.....

[2]

- (iii) Plot a bar chart on the grid of the average rising time of the leaf discs for plants **X** and **Y**.



[3]

- (iv) Suggest why the leaf discs rise when photosynthesis takes place.

.....
 [1]

- (v) Explain why five leaf discs of each leaf type were used.

.....
 [1]

- (vi) Identify the variable that was:

measured
 changed [2]

- (vii) State **two** variables that were kept constant.

1
 2 [2]

- 2 (a) Fig. 2.1 and Fig. 2.2 are photomicrographs of cross-sections of leaves taken from different areas of the same tree. Some parts of the tree are shaded from the Sun and some parts are in direct sunlight.

The cross-section shown in Fig. 2.1 was taken from a leaf grown in the shade and the cross-section shown in Fig. 2.2 was taken from a leaf grown in direct sunlight.

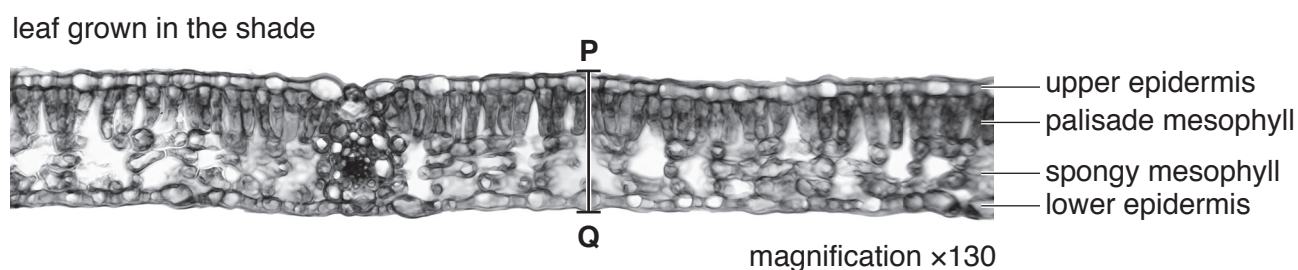


Fig. 2.1

- (i) State **two** visible differences between the leaves shown in Fig. 2.1 and Fig. 2.2.

1

.....

2

.....

leaf grown in direct sunlight

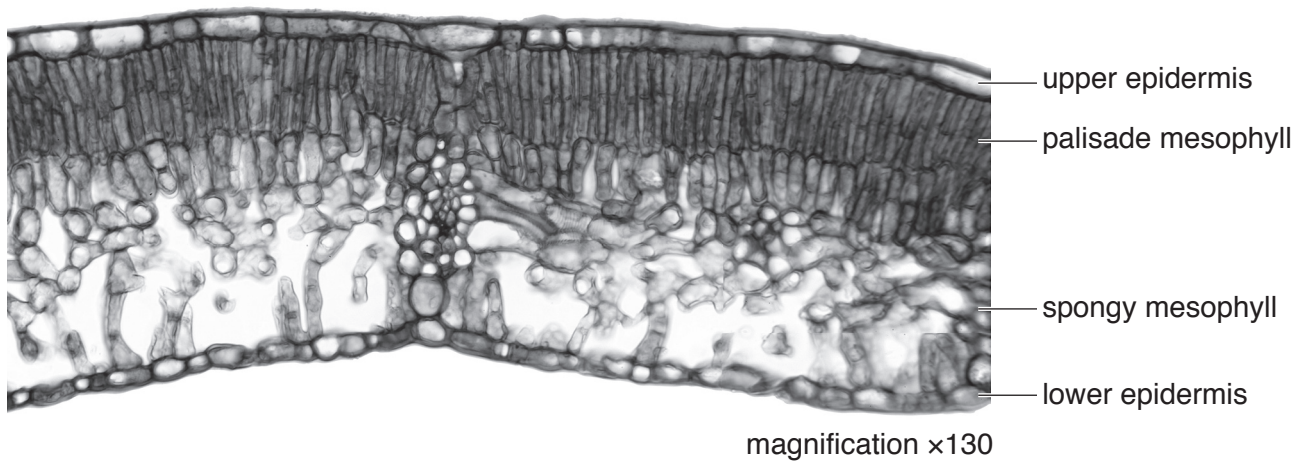


Fig. 2.2

(ii) Make a large drawing of the leaf cross-section shown in **Fig. 2.2**.

Do **not** draw individual cells. Do **not** label your drawing.

[4]

- (iii) Measure the leaf thickness at line **PQ** in Fig. 2.1. Include the unit.

length of **PQ**

Calculate the actual leaf thickness using the equation:

$$\text{actual leaf thickness} = \frac{\text{length of line PQ}}{\text{magnification}}$$

Show your working and give your answer to **two** decimal places.

.....
[3]

- (b) A student measured the length and the thickness of some leaves taken from a different tree.

Some parts of the tree were in direct sunlight and some parts of the tree were shaded from the Sun.

Fig. 2.3 shows a diagram of two of the leaves sampled.

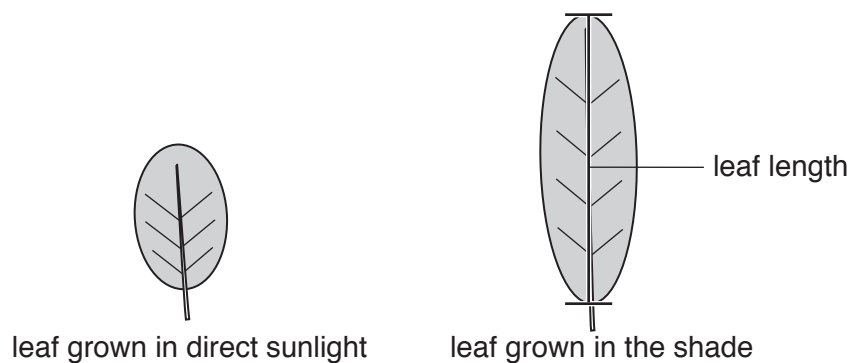


Fig. 2.3

Table 2.1 shows the average leaf thickness and the average leaf length

Table 2.1

	leaves in direct sunlight	leaves in the shade	difference	percentage difference
average leaf thickness / mm	2.27	1.53	0.74	32.60
average leaf length / mm	70.00	105.00		

- (i) Calculate the percentage difference between the average leaf length of the leaves grown in direct sunlight and the average leaf length of the leaves grown in the shade.

Write your answers in Table 2.1.

Space for working.

[2]

- (ii) The student was testing a hypothesis that stated:

“leaves grown in the shade will be larger than leaves grown in direct sunlight”

Use Table 2.1 to explain how the data:

supports this hypothesis

.....

.....

.....

does **not** support this hypothesis

.....

.....

.....

[3]

- (c) Before testing leaves for the presence of starch, the green chlorophyll must be removed. The chlorophyll can be removed by boiling the leaf in ethanol.

(i) Describe how ethanol can be boiled safely.

.....
.....
.....[1]

(ii) Suggest why the chlorophyll needs to be removed.

.....
.....[1]

(iii) A student wanted to find out if starch was present in **both** leaves grown in direct sunlight and leaves grown in the shade.

Plan an investigation to determine if starch is present in both types of leaf.

.....
.....
.....
.....
.....
.....
.....
.....
.....
.....
.....
.....[5]

[Total: 21]

BLANK PAGE

Permission to reproduce items where third-party owned material protected by copyright is included has been sought and cleared where possible. Every reasonable effort has been made by the publisher (UCLES) to trace copyright holders, but if any items requiring clearance have unwittingly been included, the publisher will be pleased to make amends at the earliest possible opportunity.

To avoid the issue of disclosure of answer-related information to candidates, all copyright acknowledgements are reproduced online in the Cambridge International Examinations Copyright Acknowledgements Booklet. This is produced for each series of examinations and is freely available to download at www.cie.org.uk after the live examination series.

Cambridge International Examinations is part of the Cambridge Assessment Group. Cambridge Assessment is the brand name of University of Cambridge Local Examinations Syndicate (UCLES), which is itself a department of the University of Cambridge.