

NEMATODES / ANNELIDS AND REPTILES

1 Fig. 3.1 shows three animals belonging to different groups.

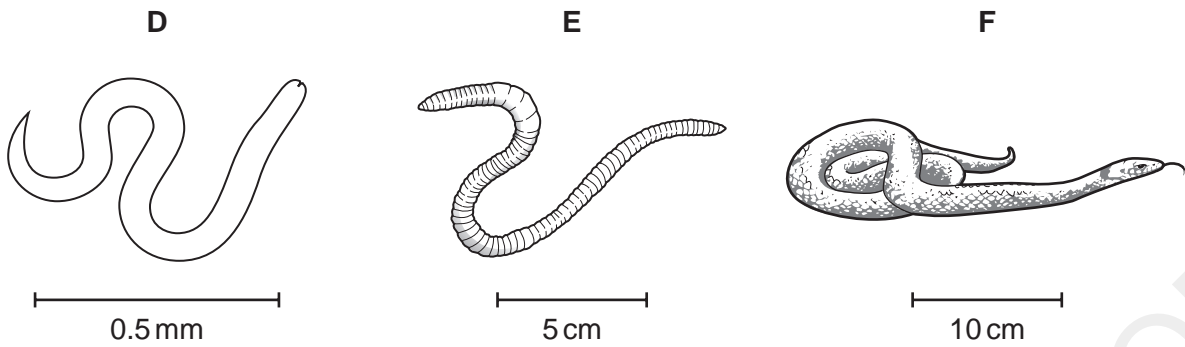


Fig. 3.1

In Table 3.1, name the group to which these animals, **D**, **E** and **F**, belong and give your reasons based on external features **visible in Fig. 3.1** only. **D** has been identified for you.

Table 3.1

	animal group	reasons
D	nematode
E
F

[5]

[Total : 5]

MARKING SCHEME

	group	reason	
D	<i>nematode</i> ;	not segmented / featureless / smooth / anterior end / different ends / small / short / AW;	Ignore long and thin – all three are. Accept head and tails are different. Head = different ends = 1. Head end not visible on Fig. 3.1. Ignore bumpy / rough. Accept recognisable spellings. Ignore snake / vertebrate / chordate. Ignore curled up. Allow large scale BOD.
E	annelid;	segmented / rings around body / different region – saddle / clitellum / size / AW;	
F	reptile;	scales / tongue / eye / size / head / AW;	
[Total: 5]			[5]

WWW.SMARTEDUHHUB.COM