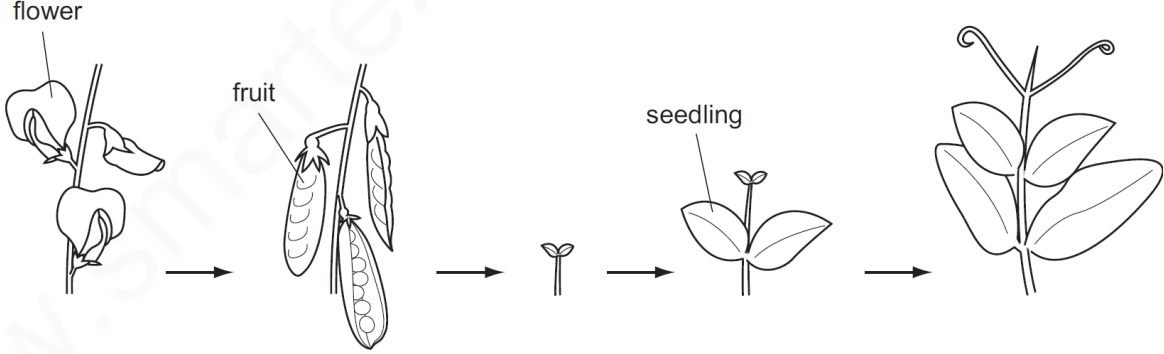
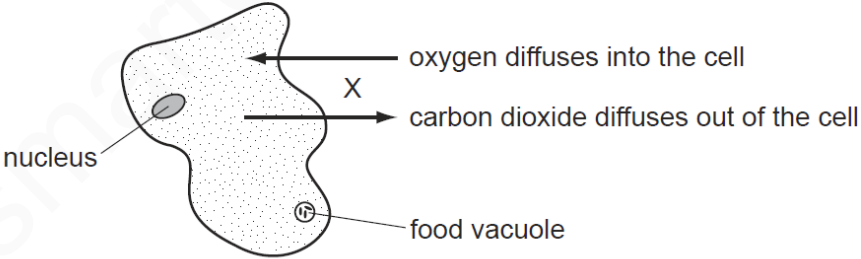


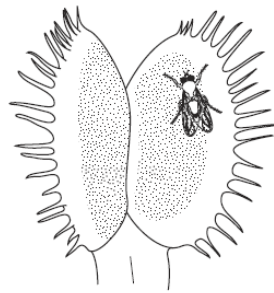
S	<b>LESSON NAME: CHARACTERISTICS OF LIVING ORGANISMS-SET-1</b>
1	<p>What are characteristics of all organisms?</p> <p><b>A</b> egestion and excretion  <b>B</b> egestion and nutrition  <b>C</b> excretion and nutrition  <b>D</b> nutrition and photosynthesis</p>
Ms-1	C
2	<p>Which organisms carry out respiration, growth, movement and excretion?</p> <p><b>A</b> all animals and all plants  <b>B</b> animals only  <b>C</b> plants only  <b>D</b> some animals and some plants</p>
Ms-2	A
3	<p>The diagrams show two characteristics of living organisms.</p>  <p>Which characteristics are shown?</p> <p><b>A</b> excretion and growth  <b>B</b> growth and reproduction  <b>C</b> reproduction and respiration  <b>D</b> respiration and excretion</p>
Ms-3	B

4	<p>What are characteristics of all organisms?</p> <p><b>A</b> egestion and excretion</p> <p><b>B</b> egestion and nutrition</p> <p><b>C</b> excretion and nutrition</p> <p><b>D</b> excretion and photosynthesis</p>
Ms-4	C
5	<p>Which characteristic is shown by all living things?</p> <p><b>A</b> breathing</p> <p><b>B</b> growing</p> <p><b>C</b> sleeping</p> <p><b>D</b> walking</p>
Ms-5	B
6	<p>Which characteristic of living organisms can involve ingestion, absorption and assimilation?</p> <p><b>A</b> excretion</p> <p><b>B</b> growth</p> <p><b>C</b> nutrition</p> <p><b>D</b> respiration</p>
Ms-6	C

7	<p>Which characteristic of living organisms can involve ingestion, absorption and assimilation?</p> <p><b>A</b> excretion  <b>B</b> growth  <b>C</b> nutrition  <b>D</b> respiration</p>
Ms-7	C
8	<p>Which characteristic of living organisms is described by the following definition?</p> <p>‘The ability to detect changes in the environment and make responses’.</p> <p><b>A</b> excretion  <b>B</b> movement  <b>C</b> respiration  <b>D</b> sensitivity</p>
Ms-8	D
9	<p>The diagram shows an amoeba, a single-celled living organism.</p>  <p>The movement of gases at X indicates the occurrence of which process or processes in the cell?</p> <p><b>A</b> excretion and nutrition  <b>B</b> excretion and respiration  <b>C</b> nutrition and respiration  <b>D</b> respiration only</p>
Ms-9	B

10

The diagram shows how a plant, called a Venus fly-trap, reacts to a fly landing on it.



a fly lands on a leaf

fly trapped  
→



the fly is digested by juices produced by the leaf

Which characteristics of living things are shown by the plant in the diagram?

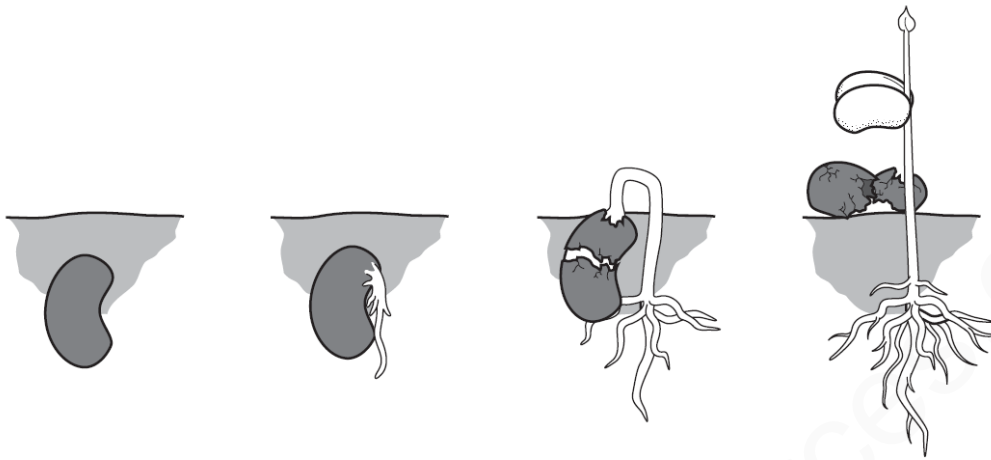
- A** excretion and growth
- B** growth and sensitivity
- C** nutrition and reproduction
- D** nutrition and sensitivity

Ms-10

D

11

The diagram shows how a seed changes after it is planted in well-watered soil.



Which characteristics of living things are demonstrated by this sequence?

- A growth and reproduction
- B growth and sensitivity
- C nutrition and reproduction
- D nutrition and sensitivity

Ms-11

B