

MOLLUSCS

1 Slugs and snails are molluscs that can live in water or on land.

Fig. 3.1 shows a slug and a snail.

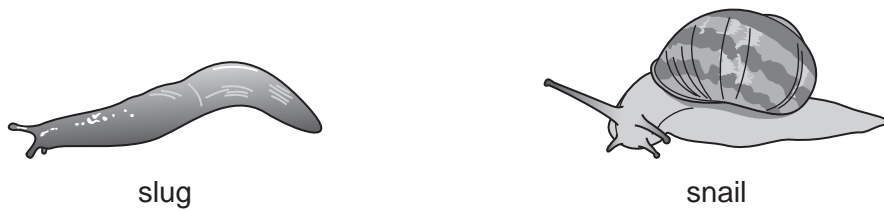


Fig. 3.1

(a) (i) Describe **two** features, **visible** in Fig. 3.1, that suggest the slug and the snail belong to the same group of molluscs.

- 1
- 2 [2]

(ii) Describe **one** difference, other than size, **visible** in Fig. 3.1, between the slug and the snail.

..... [1]

Fig. 3.2 shows a shell of a mollusc.



Fig. 3.2

(b) Suggest the importance of the shell to molluscs that belong to this group.

.....
..... [1]

[Total: 4]

MARKING SCHEME

(a) (i)	Two similar visible features from: tentacles; foot; unsegmented body / no segments AW;	[max 2]	I. sense organs / eyes / antennae I. shape of body I. slimy / mucus / soft I. no legs
(ii)	One difference: shell;	[1]	A. darker A. different number tentacles A. shiny
(b)	Any one from: protection qualified e.g. against predators / (named) environmental factor; prevent desiccation;	[max 1]	I. shelter / hiding alone A. waves / wind A. camouflage /hiding if qualified e.g. from predators
		[Total: 4]	