

# FEATURES OF ARTHROPODS-KEYS

1 (a) Fig. 1.1 shows four arthropods.

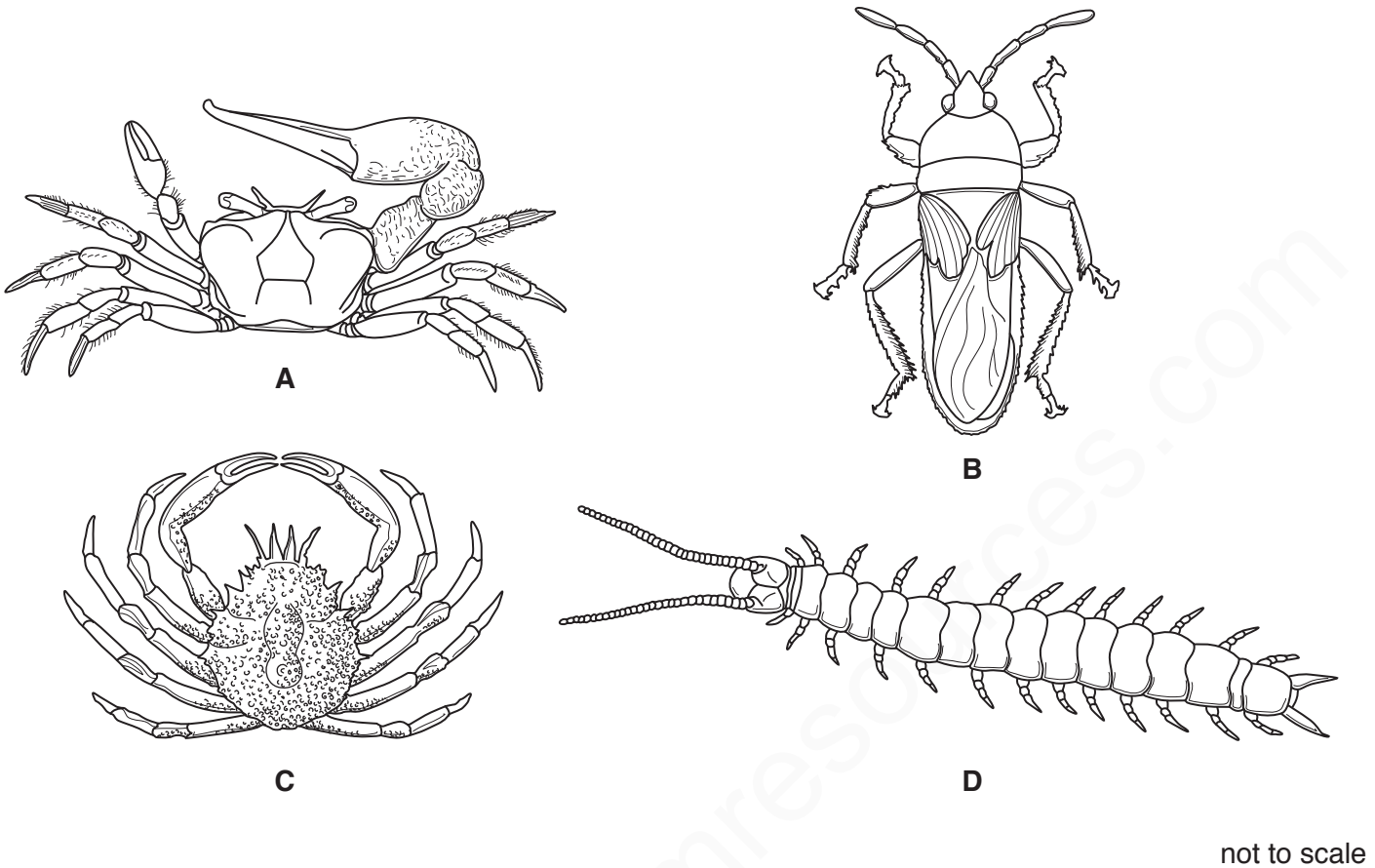


Fig. 1.1

(i) State **two** features, visible in Fig. 1.1, that are common to all arthropods.

- 1 .....
- 2 .....

[2]

(ii) Fig. 1.2 is a dichotomous key for the arthropods shown in Fig. 1.1.

Complete Fig. 1.2 by writing suitable statements in:

- box 2 to identify species **B**
- box 3 to separate species **C** and **A**.

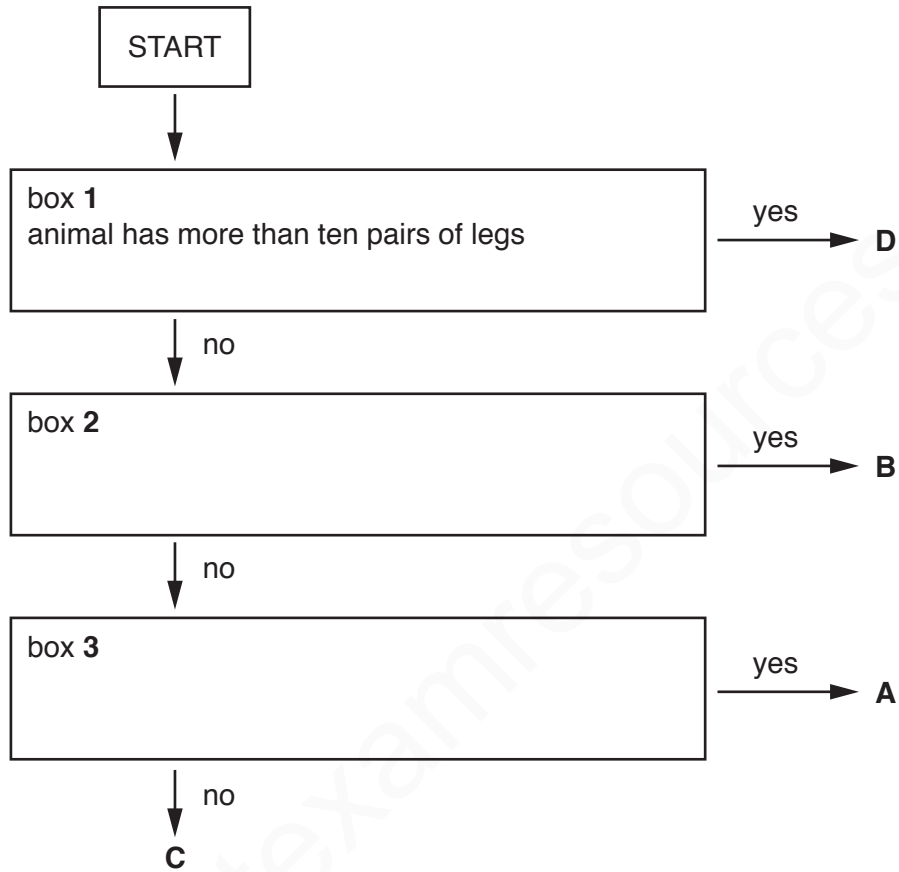


Fig. 1.2

[2]

**MARKING SCHEME:**

1(a)(i)	<p>exoskeleton / AW ;          jointed / segmented, limbs / legs / appendages / AW ;          pairs of, limbs / legs / appendages / AW ;          segmented (body) / AW ;          bilateral body symmetry ;</p>	2	
1(a)(ii)	<p><b>Box 2:</b> <i>any one from:</i>          animal has, 3 pairs of legs / 6 legs / less 4 pairs of legs / less than 8 legs ;          wings ;          head, thorax, abdomen / body in three sections ;          no, pincers / claws / carapace ;</p> <p><b>Box 3:</b> <i>any one from:</i>          (animal has) claws / pincers, of different sizes / AW ;          eyes on stalks ;          smooth, carapace / body / 'shell' ;          body, has five sides / is angular ;          hairs / bristles / AW, on, legs / claws ;</p>	2	

www.smartexamresources.com