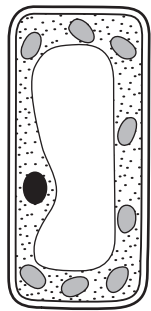


# CHARACTERISTICS OF LIVING ORGANISMS-SET-2

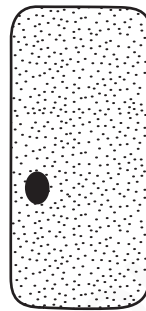
**1** What is correct for **all** living organisms?

- A They are sensitive to changes in their environment.
- B They excrete solid waste from their bodies.
- C They feed on other living organisms.
- D They grow larger by increasing their cell number.

**2** The diagram shows a plant cell and an animal cell. The two cells are **not** drawn to the same scale.



magnification  
 $\times 1000$



magnification  
 $\times 2000$

**3** The actual height of the animal cell is 0.02 mm.

What is the height of the plant cell?

- A 0.01 mm
- B 0.02 mm
- C 0.04 mm
- D 40 mm

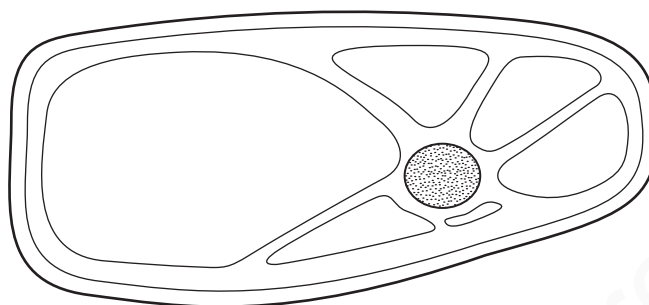
**4** Which statement about the characteristics of living organisms is correct?

- A Excretion is the breakdown of molecules to release energy.
- B Nutrition is the removal of excess substances, toxic materials and waste products.
- C Respiration is the taking in of organic substances and mineral ions.
- D Sensitivity is the ability to detect and respond to changes in the environment.

5 What is **not** a characteristic of all living organisms?

- A breathing
- B excretion
- C movement
- D reproduction

6 The diagram shows a section through a cell from a leaf, magnified  $\times 4000$ . The diameter of the nucleus in the diagram is 10 mm.



7 What is the true diameter of the nucleus?

- A 0.0025 mm
- B 0.0050 mm
- C 0.0100 mm
- D 0.0250 mm

8 All living organisms are capable of

- A asexual reproduction.
- B excretion.
- C photosynthesis.
- D phototropism.