

S

LESSON NAME: VERTEBRATES-SET-1

1

The table shows some characteristic features of four vertebrates.

Which vertebrate is a mammal?

vertebrate	feature				
	scales	lays eggs	feathers	wings	hair
A	✓	✓	x	x	x
B	x	✓	x	x	x
C	x	✓	✓	✓	x
D	x	x	x	✓	✓

key
 ✓ feature present
 x feature absent

Ms-1

D

2

Which characteristics do fish have?

	backbone	scales	hair
A	x	x	✓
B	x	✓	x
C	✓	✓	x
D	✓	x	✓

Ms-2

C

3

The diagram shows some external features of a rat.



Which features, seen in the diagram, show that a rat is a mammal?

- A two external ears and two eyes
- B fur and whiskers
- C tail and four legs
- D milk and sweat production

Ms-3

B

4

The table shows the classification of four vertebrate animals.

	animal 1	animal 2	animal 3	animal 4
phylum	Chordata	Chordata	Chordata	Chordata
class	Mammalia	Mammalia	Mammalia	Mammalia
order	Dermoptera	Dermoptera	Dermoptera	Dermoptera
family	Lemuridae	Indridae	Lemuridae	Indridae
genus	<i>Eulemur</i>	<i>Propithecus</i>	<i>Eulemur</i>	<i>Avahi</i>
species	<i>fulvus</i>	<i>diadema</i>	<i>coronatus</i>	<i>laniger</i>

Which two organisms are **most** closely related?

- A 1 and 2
- B 1 and 3
- C 2 and 3
- D 2 and 4

Ms-4

B

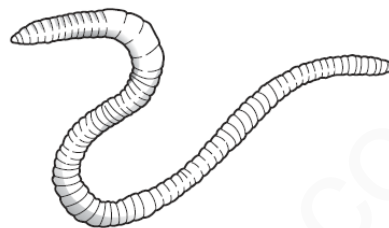
5

The diagrams show four different animals. They are not drawn to the same scale.

W



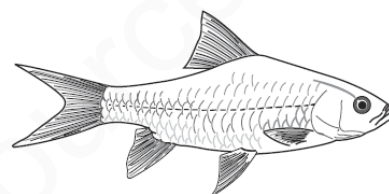
X



Y



Z



Which are vertebrates?

A W and X**B** X and Y**C** Y and Z**D** W and Z

Ms-5

D

6

The table shows some characteristic features of four vertebrates.

Which vertebrate is a mammal?

	feature				
	scales	lays eggs	feathers	wings	hair
A	✓	✓	✗	✗	✗
B	✗	✓	✗	✗	✗
C	✗	✓	✓	✓	✗
D	✗	✗	✗	✓	✓

key

✓ = present

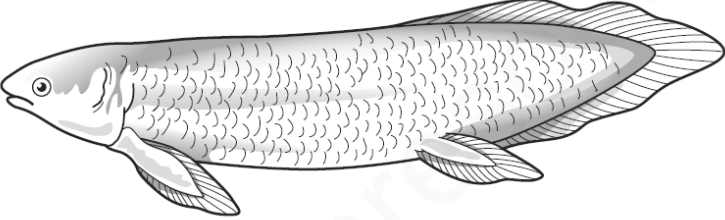
✗ = not present

Ms-6

D

7	<p>A student observed a vertebrate swimming in a pond. The animal's surface was smooth and hairless. It used its four legs to swim. At intervals, the animal came to the surface to take mouthfuls of air.</p> <p>To which vertebrate class does this animal belong?</p> <p>A amphibians B fish C mammals D reptiles</p>
---	--

Ms-7	A
------	---

8	<p>The diagram shows the external features of an animal.</p>  <p>To which class does it belong?</p> <p>A amphibians B fish C mammals D reptiles</p>
---	--

Ms-8	B
------	---

9	<p>The diagram shows a key for five vertebrates.</p> <div style="text-align: center;"> <pre> graph TD Start[START HERE] --> HasLegs[has legs] Start --> NoLegs[has no legs] NoLegs --- OrgT[organism T] HasLegs --> HasFeathers[has feathers] HasLegs --> NoFeathers[has no feathers] HasFeathers --- OrgU[organism U] NoFeathers --> HasScales[has scales] NoFeathers --> NoScales[has no scales] HasScales --- OrgV[organism V] NoScales --- OrgW[organism W] </pre> </div> <p>Which class of vertebrates does organism W belong to?</p> <p>A amphibians B birds C fish D reptiles</p>
Ms-9	A
10	<p>Many snakes that belong to the viper family are unusual in that they give birth to live young.</p> <p>This is usually a characteristic of which vertebrate group?</p> <p>A amphibians B birds C bony fish D mammals</p>
Ms-10	D

11	<p>Use the key to identify which group is amphibians.</p> <p>1 hair present mammals hair absent go to 2</p> <p>2 feathers present group A feathers absent go to 3</p> <p>3 dry scaly skin..... group B moist skin go to 4</p> <p>4 four limbs group C no limbs group D</p>
Ms-11	C