

A weight attached to one end of a short length of string is swinging from side to side. The highest points in the swing are A and B, as shown in Fig. 1.1.

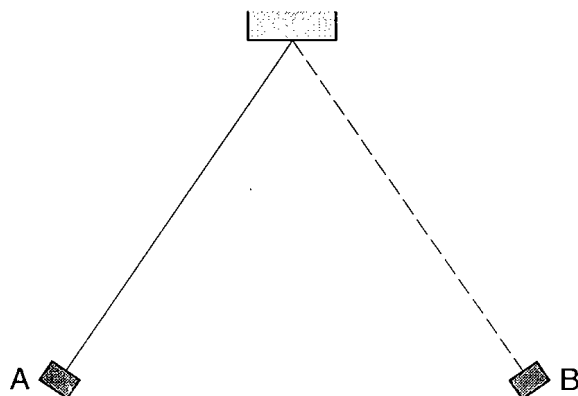


Fig. 1.1

- (a) With reference to Fig. 1.1, state what is meant by the amplitude of the oscillations.

*It distance between highest points of weight, iin this case distance AB*

- (b) Describe how the amplitude of the oscillations could be measured.

*use of protractor and note value of max angle from verticle. Avoid parallax error*